

Quick Start

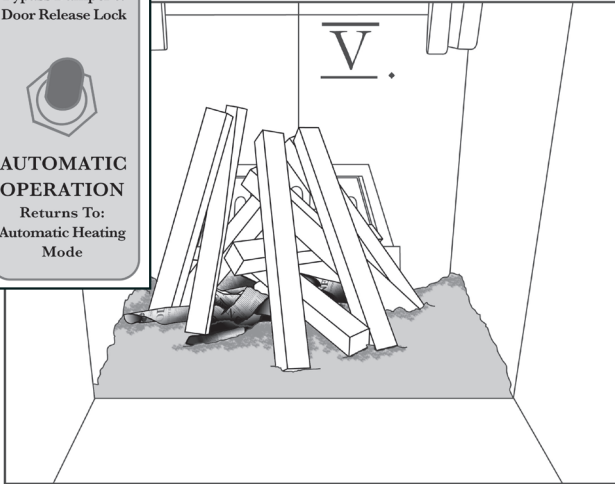
Step 1

LOAD FUEL
Opens:
Bypass Damper &
Door Release Lock



AUTOMATIC OPERATION
Returns To:
Automatic Heating
Mode

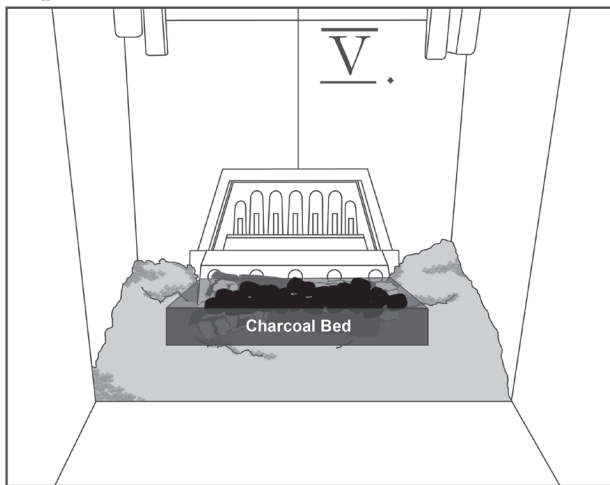
Step 3



1. Move damper switch up to activate damper.
2. Open the heater door.
3. Build the fire with kindling and small pieces of wood.

WARNING: DO NOT USE CHEMICALS or FLUIDS to START THE FIRE

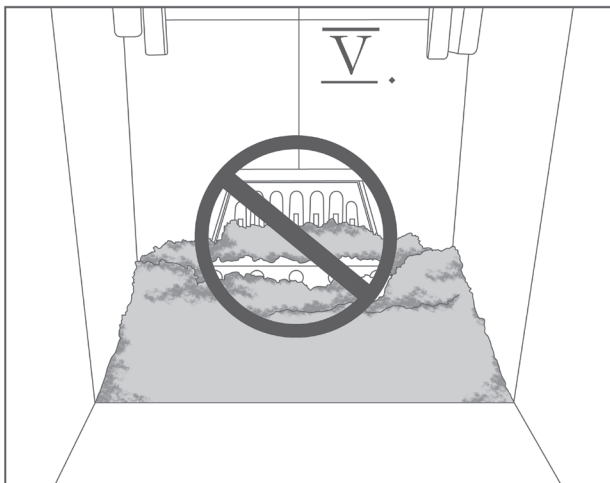
Step 9



4. Wait for the stack temperature to reach 125 degrees, as shown on the side display. There is no “On” Switch. The heater starts or “wakes up” when it senses a temperature in the stack above 125 degrees. The side display shows the stack temperature. The heater control system is activated by the temperature detected in the stack.
5. Close the door and move damper switch down to set on “Automatic.”
6. Add fuel as needed to increase stack temperature to 775 degrees.
7. Establish charcoal bed by continuing to add fuel as needed.

Remember: Activate damper switch when opening door and replace damper switch to “Automatic” position after closing heater door.

KEEP AIR INLETS CLEAR OF ASH BUILDUP



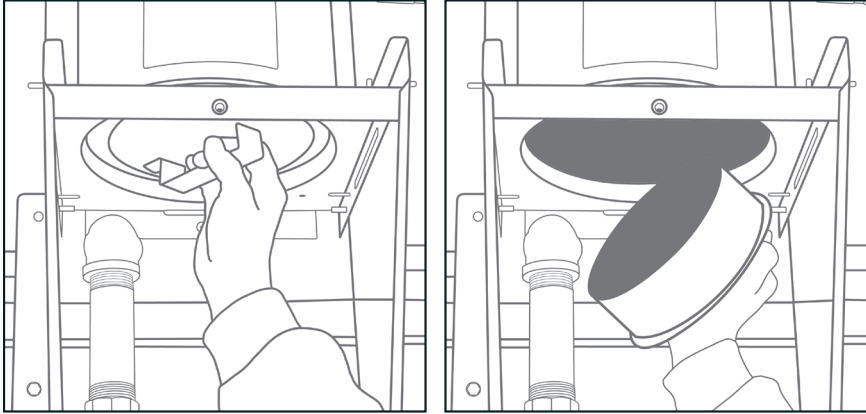
8. The damper will close automatically.
9. Add more fuel, pushing charcoal against the air inlets.

KEEP AIR INLETS CLEAR OF ASH BUILDUP

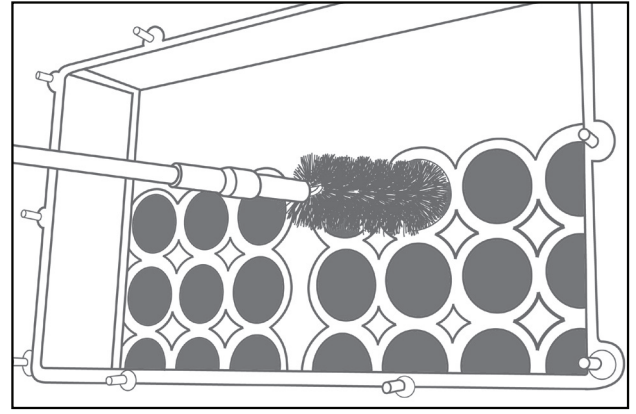
Maintenance Checklist

Check these items monthly and refer to manual for detailed maintenance instructions.

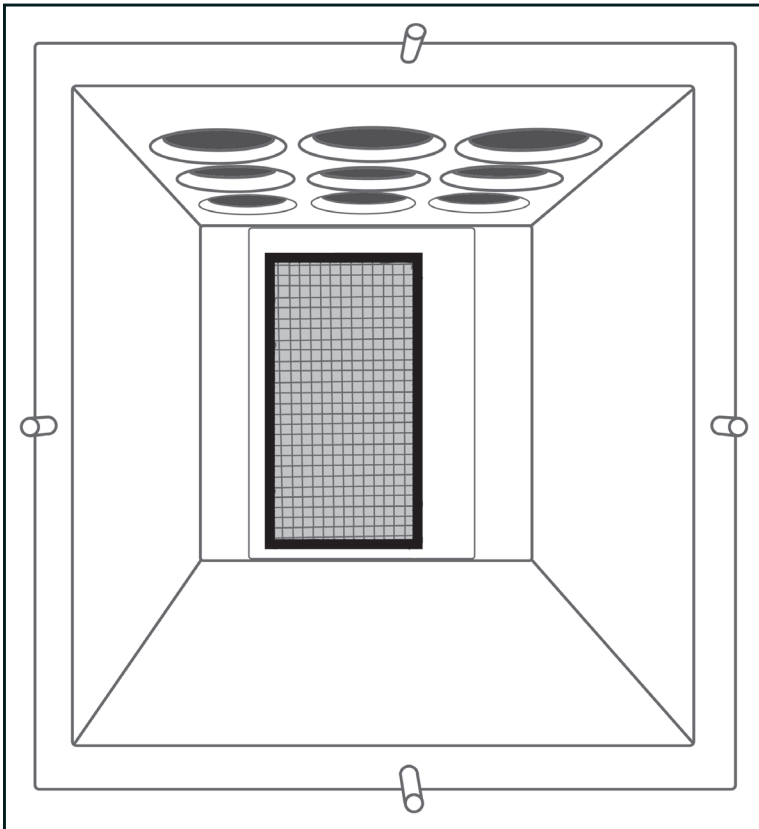
- 1. Inspect chimney for creosote buildup and clean as needed



- 2. Check the heat exchangers



- 3. Inspect catalytic converters for damage and/or ash plugging



- 4. Check door gaskets for proper seal

